

## METHODS FOR CALCULATING POWER LOSSES IN WORM GEAR DRIVES<sup>1</sup>

---

**Assoc. Prof. Vasko Dobrev, PhD**

Department of Machine Science, Machine Elements and Engineering graphics,  
University of Ruse, Bulgaria  
Tel.: 00 359 82 888 492  
E-mail: vdobrev@uni-ruse.bg

**Yuliyan Dimitrov, PhD**

Department of Machine Science, Machine Elements and Engineering graphics,  
University of Ruse, Bulgaria  
Tel.: 00 359 82 888 235  
E-mail: ydimitrov@uni-ruse.bg

***Abstract:** The paper reviews existing methods of calculating power losses in worm gear drives. It analyses the differences between the methods taken into consideration. Special attention is given to calculation procedure for estimation friction coefficients of worm gear meshing. The purpose of this procedure was to determine the coefficients based upon boundary and hydrodynamic lubrication. A short summary of the existing information about values of power losses for worm gear drives in standards and catalogues is made. Based on the theoretical research made, conclusions are derived about further work and investigations in the area of research of power losses and possible efficiency increasing of worm gearboxes.*

***Keywords:** Power losses, Worm gear drives, Efficiency, Calculation methods.*

### INTRODUCTION

The function of the worm gear drives is transmitting power at high velocity ratios between non-intersecting shafts at right angles (usually). An advantage of these drives is their high velocity ratio, which can reach the value of 300 and even more in 1 stage within relative small overall dimensions.

A great disadvantage of worm gear drives is their low efficiency. The main components of worm gearing are a worm, which is the driving member and a worm wheel or gear (the driven member). The worm wheel or gear is similar to a helical gear with a face curved to conform to the shape of the worm. The worm material is steel while the material of the worm wheel is quite often: bronze or cast iron.

Because of the high gear ratios realized, the sliding velocity between the components in the worm gear meshing is also significant. Therefore, the friction in the meshing area and the meshing power losses for worm gear drives are higher in comparison with spur gear trains. There is a calculation method for determination of the efficiency of worm drives described in DIN 3996, which is unfortunately not valid for all gear ratios.

The power flow in worm gear drives begins from the input shaft, and then it goes to the worm gear meshing and to the output shaft. The simplicity of this power flow is due to the compact worm gear unit. It includes only two shafts, a worm and a worm wheel in meshing, bearing, seals and oil sump.

Therefore, the power losses in worm drives are four main parameters: meshing losses, oil churning losses, bearing and shaft seal losses.

The objective of the investigation is to analyse the differences between the calculation methods for power losses in worm gear drives and to derive conclusion and recommendations about further

---

<sup>1</sup> Presented on October 26, 2018 with the original title: METHODS FOR CALCULATING POWER LOSSES IN WORM GEAR DRIVES

work and investigations in the area of research of power losses and possible efficiency increasing of worm gearboxes.

### METHODS FOR CALCULATING POWER LOSSES IN WORM GEAR DRIVES

The method described in (Michaelis et al., 2011) presents a study of bearing and gear tooth friction losses. According to this research, there are two kinds of losses: load-independent losses and load-dependent losses. The authors made experiments with different types of bearings at various conditions. A great number of publications emphasize that friction losses in meshing are the most significant source of losses in gear drives according to: (Anderson, N. E. & Loewenthal, S. H., 1981) and (Velex, P. & Cahouet, V., 2000).

The research made is based also upon previous achievements of scientists at the department of Machine science, machine elements and engineering graphics in Ruse. A solution for a transmission with increased efficiency for a heavy vehicle has been done. The design components, materials applied and some special features of this product are presented in details in (Orzech, K., Khoshaba, S. & Dobрева, A., 2009) and (Dobрева, A. et al., 2010).

Another important investigation is the approach for improving the tribology indicators for gear trains with internal meshing and small difference between the teeth number described in (Dobрева, A. & Stoyanov, S, 2012).

The evaluation of the friction losses in the meshing depends significantly upon the determination of the losses of the specific sliding in the internal gear trains. Some publications taken into consideration deal with an evaluation of possible options for increasing the estimated efficiency of gear trains, (Dobрева, A., 2013), (Dobрева, A. & Dobrev, V., 2007) and (Dobрева, A. & Dobrev, V., 2018).

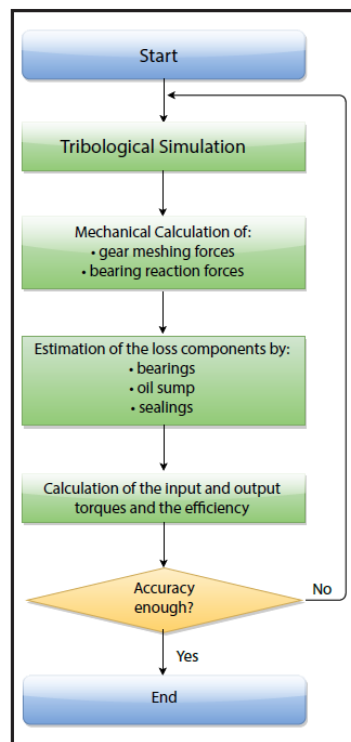


Fig. 1. Flow chart of calculating of worm gearbox efficiency, (Magyar, B. & Sauer, B., 2012)

The authors in (Magyar, B. & Sauer, B., 2012) describe a very univocal and summarizing calculation procedure. During the first stage of this procedure the friction coefficients of the worm gear meshing are calculate based upon boundary lubrication and hydrodynamic lubrication.

The second stage includes the calculation of the average tooth friction coefficient based upon the local tooth coefficients. The exact values of the friction coefficients are important for the determination of the gear meshing forces and the bearing reaction forces through the static

equilibrium equations. The next stage of the method includes the calculation of the bearing losses, oil churning power losses and shaft seals power losses. The flow chart on Fig.1 shows the calculation procedure described.

The method presented possesses a significant advantage in comparison to conventional empirical equations. These traditional methods make a difference mainly between the load – dependant and load - independant losses. The method of the authors (Magyar, B. & Sauer, B., 2012) separates also between the power loss sources. This make the method more appropriate for optimizing the gear geometry and decreasing of power gearbox losses.

## POWER LOSSES INFORMATION FOR WORM DRIVES IN STANDARDS AND CATALOGUES

Standards concerning measurement methods and energy efficiency of electrical motors give information about motor efficiency. These data are visible by means of efficiency maps, (Dereyne, S. et al., 2011) and (Stockman, K. et al., 2010). In contrast to this, the available information on gearboxes is extremely limited. Some data on the mechanical and/or hydraulic losses of a single gear wheel pair is available in, for example: (Höhn, B.R., Michaelis K. & Wimmer, A., 2007) and (Yenti, C., Phongsupasamit, S., & Ratanasumawong, C., 2013). It is very important that a complete gearbox consists of several gear pairs and other parts. As already mentioned, the total losses are a combination of bearing losses, seal losses, churning losses, etc. as illustrated in Fig 2.

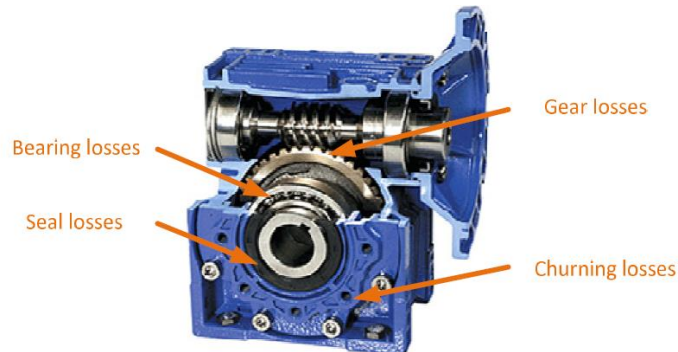


Fig. 2. Typical worm gearbox losses, (Dereyne et al., 2016)

A small number of publications treats the total gearbox efficiency. Moreover, the gearbox catalogues provide also insufficient information. The manufacturers generally give the efficiency value as a function of the number of gear stages in these catalogues. Therefore, one efficiency value corresponds to a whole range of gearboxes. There is no enough information on the influence of the ratio or the power transmitted on the efficiency of the gearbox. Only worm gearboxes form an exception as their nominal efficiency depends to a certain extent to the values of the power transmitted and the ratio according to the manufacturers' catalogues. However, even for these gearboxes, the influence of the torque and speed on the gearbox efficiency is not sufficient.

## CONCLUSIONS

The paper reviews existing methods of calculating power losses in worm gear drives. The authors analyse the advantages and some negative features of famous methods for calculating power losses in worm gear trains. This theoretical research indicates the most appropriate approach for future analytical and simulation investigations. Based on the theoretical research made, the authors derive the following conclusions:

1. It is necessary to implement further work and investigations in the area of research and calculation of power losses.
2. A very important objective of a future PhD work will be to find possible solutions for efficiency increasing of worm gearboxes.

## REFERENCES

- Anderson, N. E. & Loewenthal, S. H. (1981). Effect of geometry and operating conditions on spur gear system power loss, *ASME J. Mech. Des.*, 103, 151–159.
- Dereyne, S., Stockman, K., Derammelaere, S. & Defreyne, P. (2011). Adjustable Speed Drive Evaluation Using ISO Efficiency Maps, *Technical University College of West-Flanders – associated with Ghent University, EEMODS 2011*, Washington.
- Dereyne, S., Defreyne, P., Algoet, E., Derammelaere, S. & Stockman, K. (2016). Efficiency measurement campaign on gearboxes, *Report of Ghent University, Campus Kortrijk, Department of Industrial System and Product Design*, Belgium
- DIN 3996 (2012). Tragfähigkeitsberechnung von Zylinder- Schneckengetrieben mit sich rechtwinklig kreuzenden Achsen. Berlin: Beuth – Verlag.
- Dobрева, A. (2013). Theoretical Investigation of the Energy Efficiency of Planetary Gear Trains, *Power Transmissions, Sinaia*, Romania, Springer Verlag Dordrecht, 289-298.
- Dobрева, A. & Dobrev, V. (2007). Research of Technical Parameters of Transmissions for Vehicles and Agricultural Machines, *UPB: Scientific Bulletin, Series D: Mechanical Engineering*, No 69, 103 – 109.
- Dobрева, A. & Dobrev, V. (2018). Innovative Methodology for Decreasing Mechanical Losses in Vehicles. *AMMA 2018, 4th International Congress of Automotive and Transport Engineering*, Technical University of Cluj-Napoca, Romania, October 2018.
- Dobрева, A., Dobrev, V. & Georgiev, G. (2010). Innovative Design Solutions of Spur and Planetary Gear Trains with Increased Energy Efficiency and Improved Load Distribution, *Scientific woks of University of Ruse*, Vol 49 (4), Ruse, Printing House of RU, 116 – 120.
- Dobрева, A. & Stoyanov, S. (2012). Optimization Research of Gear Trains with Internal Meshing. Ruse, *University Publishing Centre*, 144 p.
- Höhn, B. R., Michaelis, K., Wimmer A. (2007) Low loss gears, *Gear technology magazine*, 6, 55-59.
- Magyar, B. & Sauer, B. (2012). Calculation of the Efficiency of Worm Gear Drives. *Power Transmission Engineering*, 6, 52 – 26.
- Michaelis, K., Höhn, B.-R. & Hinterstoißer, M. (2011). Influence factors on gearbox power loss, *Ind. Lubr. Tribol.*, 63, 46–55.
- Orzech, K., Khoshaba, S. & Dobрева, A. (2009). Development and Design of a Two Speed Transfer Gearbox for a Truck, *Proceedings of General Machine Design 2009*, Ruse, Printing House of RU, 177 – 180.
- Stockman, K., Dereyne, S., Vanhooydonck, D., Symens, W., Lemmens, J. & Deprez, W. (2010). ISO efficiency contour measurements results for variable speed drives, *International Conference on Electrical Machines and Systems, ICEMS 2009*, Rome.
- Velex, P. & Cahouet, V. (2000). Experimental and numerical investigations on the influence of tooth friction in spur and helical gear dynamics, *ASME J. Mech. Des.*, 122, 515–522.
- Yenti, C., Phongsupasamit, S. & Ratanasumawong, C. (2013). Analytical and Experimental Investigation of Parameters Affecting Sliding Loss in a Spur Gear Pair, *Engineering Journal*, 17, (1), 79–94.